

MP3/VOICE RECORDING WATCH

INSTRUCTION MANUAL

TABLE OF CONTENT

I GENERAL DESCRIPTIONS -----	1
Basic Functions-----	1
Accessories-----	4
II OPERATION -----	5
Button function overview-----	5
Function light overview-----	6
Power on/off-----	7
Mode switch-----	7
Playing MP3 music-----	8
Equalizer modes-----	9
Playing voice recording-----	10
Shortcut keys to recording function-----	10
Volume & music/recording control-----	10
Deleting music/voice recording-----	11
Time setting-----	11
Battery power indicator-----	11
PC connection-----	12
Battery recharging-----	12

III INSTALLATION OF MP3 PLAYER -----	14
System requirements-----	14
USB connection-----	14
Installation guide-----	15
USB disk Partition and Encrypt-----	21
Firmware upgrade-----	25
IV CAUTIONS -----	26
V HELPFUL TIPS -----	27
VI PRODUCT SPECIFICATIONS -----	29
NOTE -----	30

I GENERAL DESCRIPTIONS

Basic Functions

1. Playable music format: MP3 / WMA / ADPCM
2. Portable storage disk USB2.0 (Full speed)
3. Playing order: Sequence, Repeat Random, Pause, Resuming
4. Choose between different equalizer modes
5. Delete (current track / voice recording)
6. Built in Microphone: ADPCM voice recording
7. Stereo earphone jack: standard ϕ 2.5mm
8. Automatic detecting of battery voltage and power indicator
9. Power saving:
 - ※Automatic power off if no button pushed in 2 minutes under pause status
 - ※Automatic power off in 2 minutes when all tracks played
10. Battery: Rechargeable Li-ion battery (3.7V)
11. Standard USB port for recharging, download and upload

12. 8 LED lights:

MP3(MP3): lights up/MP3 mode; flashing per second/playing MP3;flashing per 0.5 second/playing MP3 in repeat random

RECORD(voice recording / playing): lights up/playing mode of voice recording; flashing per second/playing voice recording;flashing per 0.5 second/recording

POWER (power supply indicator): lights up/power on; off/ power off or no power

(also as battery power indicator) : lights up / full power; flashing per second / 1/10 power remained; off / out of power and automatic power off

(also as USB indicator): lights up / in proper connection with PC

CHARGE (recharging): lights up/recharging;off/recharging over

POP: lights up / equalizer set as POP mode

ROCK : lights up / equalizer set as ROCK mode

JAZZ : lights up / equalizer set as JAZZ mode

CLASSIC: lights up / equalizer set as CLASSIC mode

14. 5 buttons:

ON/OFF/▶/|| ----power on/power off /play/pause

▶▶/VOLUME+ ----forward / increase volume

◀◀/VOLUME- ----reverse/decrease volume

DEL/RANDOM ----delete /random

MODE/RECORD ----working mode/record

Accessories



MP3 Watch



Instruction Manual



Earphone



Installation CD



Earphone Plug Converter
(2.5mm to 3.5mm) (optional)



USB extension cable

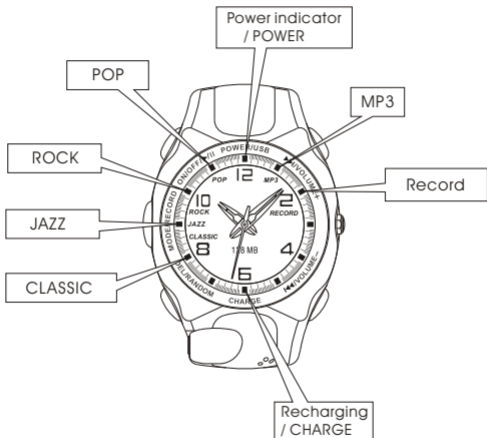


Charging adapter(optional)

II OPERATION



Button function overview



Function light overview

Power on/off

Press button **ON/OFF/▶/||** momentarily
---- POWER light lights up, power on then wait for 10 seconds, the MP3 player will be ready to play.

Press and hold button **ON/OFF/▶/||** for a while
----POWER light off, power off

※Note: default mode when power on : 1) MP3 playing mode, MP3 light lights up. 2) equalizer mode, same as when power off last time 3) play the last track of voice recording once motivated.



Mode switch

When MP3 playback or voice recording mode are paused or voice recording is stopped momentarily, mode switch as below.



Playing MP3 mode
press **MODE/RECORD**
momentarily

Playing recording mode
press **MODE/RECORD**
momentarily



MP3 sequence mode
press **DEL/RANDOM**
momentarily

MP3 random mode
press **DEL/RANDOM**
momentarily

Playing MP3 music (under MP3 mode)

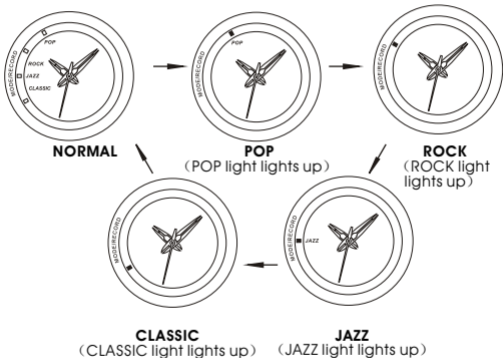
Press **ON/OFF/▶/||** momentarily ----play, MP3 light flashing

Press again **ON/OFF/▶/||** momentarily----
pause, MP3 light lights up



Equalizer modes (under music playing mode)

Press button **MODE/RECORD** momentarily --- switch among the following equalizer modes:



※Note: under **NORMAL** mode POP/ROCK/CLASSIC/JAZZ lights are off.

Playing voice recording (under recording playing mode)

Press **ON/OFF/▶/||** momentarily ---- play, RECORD light flashing

Press again **ON/OFF/▶/||** momentarily ---- pause, RECORD light lights up



Shortcut keys to recording function (under playing pause mode or recording pause mode)

Press **MODE/RECORD** and hold for a while ---- recording starts, record light flashing per 0.5 second

press **MODE/RECORD** ---- recording stops, record light lights up



Volume & music/voice recording control (Under music playing or voice recording mode)

Press and hold **▶/VOLUME+** ---- increase volume

Press **▶/VOLUME+** momentarily ---- play next track (music/recording)

Press and hold **◀/VOLUME-** ---- decrease volume

Press **◀/VOLUME-** momentarily (1) play previous track (music/recording) if pressing within 5 seconds after playing (2) replay

the current track (music/recording) if pressing after playing for 5 seconds



Deleting music/voice recording

Press and hold button **DEL/RANDOM** for 2 seconds----delete the current track(music/voice recording)

※ NOTE: Please connect with PC to delete the songs or recordings which are less than 2 seconds.

Time setting

- 1.Pull out the crown to stop the second hand when it sweeps to 12 o'clock.
- 2.Turn the crown to set hour and minute hands.
- 3.Push back the crown and the second hand starts sweeping.

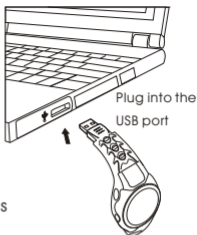


Battery power indicator

Power indicator (POWER light): lights up/full power
Flashing once per second indicates 10% power remains
Off/out of power and automatically power off

PC connection

1. Turn on the MP3 player
2. Connect the MP3 player by the USB jack to PC through USB cable, POWER light lights up when connected.
3. Flashing POWER light means data is being transferred (BUSY); lighted POWER light means standby status (idle); dead POWER light means disconnected from PC (suspend).
4. Remove the MP3 player from the PC as per PC's requirement when upload and download is completed.



Battery recharging

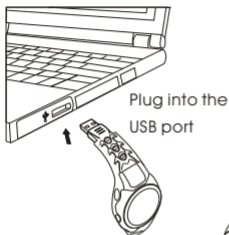
Recharging is needed when power indicator (POWER light) is flashing once per second or the light is off.

1. Connect the MP3 player to PC through USB cable or optional adaptor to AC power for recharging (ref. To Figure 'Battery recharging').
2. Recharging light (CHARGE) lights up-under recharge

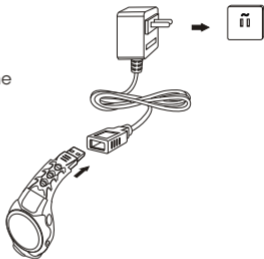


3.Recharging light (CHARGE) off-recharge finished

※ NOTE: a)output voltage should be $5V \pm 0.25V$,when recharging the MP3 output electric current $\geq 500mA$.



Plug into 100v-240v AC power



Battery recharging

III INSTALLATION OF DRIVER

System requirements

IBM compatible personal computer

Pentium 1 66 MHz MMX or faster

Windows 98SE / ME / 2000 / XP

USB port (Universal Serial Bus)

Mac Os X / Mac Os 10.3 above

64MB RAM or more

20MB free hard-disk space or more

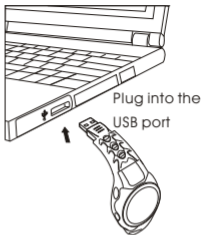
4×CD-ROM drive or more

Accessible to Internet (Recommended)

※Note: User name has to be set as administrator under Windows 2000

USB connection

- 1.USB port on your PC is used for sending files.
- 2.Check the USB port on your PC referring to its hardware instruction manual.
- 3.Power light and CHARGE light are lighted when the MP3 sunglasses are connected to PC through USB port.
- 4.Under Win98 SE make sure the driver for the MP3 Player enclosed in the packing is successfully installed before connecting the product to PC.

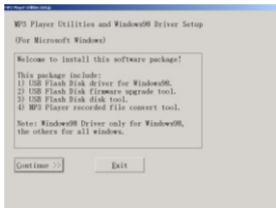


Installation guide

Install the USB driver:

Put the installation CD into CD-ROM Drive and then it will be installed automatically.

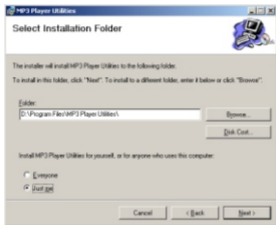
The following window will pop up:



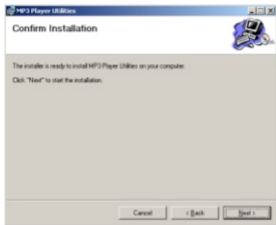
Click **Continue**, and the window below will pop up.



Click **Next** to continue



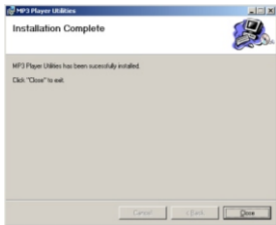
Select the installation folder and then click **Next**.



Click **Next** to start installation



Installation completed, and the window below will pop up



Click **Finish** and restart your PC according to the PC requirement.

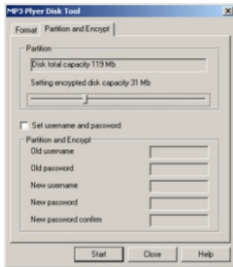
USB Disk Partition and Encrypt

1. Turn on the MP3 player
2. Connect the MP3 player to PC (Please refer to **PC Connection**)
3. Click (Start) → (Driver) → (MP3 Player Utilities 1.47) → (MP3 Player Disk Tool)

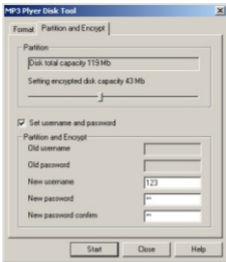
The following windows will pop up.



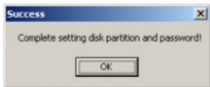
Select **Partition and Encrypt** and the window below will pop up.



Set suitable encrypted disk capacity.
Set new username and new password,
and then click **Start**.



Partition completed, the window below will pop up.

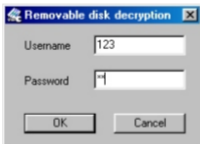


Click **OK**, and restart your PC according to PC requirement.

4. There will be two removable disks at this moment. The encrypted disk will show the following documents.



5. Click **RdiskDecrypt.exe**, and type in the correct username and password to open the disk.

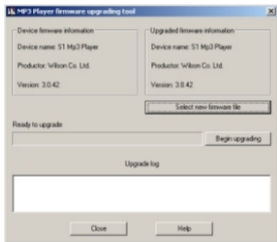


6. Correct username and password are needed to open the encrypted disk, whenever connect the MP3 player to the PC.

Firmware upgrade

1. Turn on the MP3 player
2. Connect the MP3 player to PC(Please refer to **PC Connection**)
3. Click (Start)→ (Driver) → (MP3 Player Utilities 1.47)→(MP3 Player Update Tool)

The following window will pop up.



4. Click Select new firmware file, select new firmware (Please download from manufacturer's website)
5. Click Start to begin upgrading

IV CAUTIONS

1. Do not disassemble or change any part of the product that is not mentioned in this manual.
2. Do not pull or plug the product with wet hands, which may cause short circuit of the product.
3. Do not expose the product to fire or excessive heat.
4. Do not expose the product to electromagnetic wave circumstances, which may cause malfunction or data transmitting error of the product.
5. Ensure the USB plug is dry before connecting to computer to avoid damage by moisture.
6. Recharge the battery after power drained to prolong the battery life.

V HELPFUL TIPS

Problem	Analysis	Solution
Unable to play MP3	Battery low	Recharge the battery
	Non standard MP3/WMA files	Delete this music, download standard MP3/WMA files
Unable to download music	USB cable broken or not connected properly.	Check the USB connection and reinsert
Unable to do voice recording	No space for more recording files	Delete some old recording files
No Drive Letter	The USB plug not connected or loose.	Check USB connection
	The Manager Software did not installed successfully.	Reinstall the Manager Software
	The PC motherboard does not support USB port.	Upgrade the motherboard driver
	MP3 player doesn't turn on.	Turn on the MP3 player
Lights of REC and MP3 flash at the same time	This would happen when there is no songs or recording inside	Not a fault

Sound skips or resets	MP3 file made at compression level exceeding 320kbps.	Using lower compressing level to record the file into MP3 format.
	Wrong music format/ damaged music file	Delete this music, download correct music file
Buttons unworkable	Product fails to work properly	Press buttons of ON/OFF/▶/ and ▶ /VOLUME+ together to reset

VI PRODUCT SPECIFICATIONS

Built in memory: 32MB/64MB/128MB/256MB/512MB/1G flash

Port: standard USB port

Battery: 170mAH/3.7V macromolecule polymer Li-ion rechargeable battery

Recharging time: 2 hours for fully charged

Battery playtime: 8 continuous hours with fully charged battery

Voice recording time: 2hours/32MB, 4.5hours/64MB, 9hours/128MB, 18hours/256MB,36hours/512MB,72hours/1G

Music playtime: WMA format (64Kbps): 1hour/32MB, 2hours/64MB, 4hours/128MB, 8hours/256MB,16hours/512MB,32hours/1G

MP3 format (128Kbps): 0.5hour/32MB, 1hour/64MB, 2hours/128MB, 4hours/256MB,8hours/512MB,16hours/1G

S/N Ratio: 80dB

Working temperature: $-5^{\circ}\text{C} \sim +50^{\circ}\text{C}$

Earphone output: 5mW+5mW

Frequency response: 20Hz~20KHz

Sampling frequency of voice recording: 8KHz

Compression level: 32Kbps~320Kbps

NOTE:

1. The manufacturer is not responsible for any radio or TV interference caused by unauthorized modifications to this equipment. Such modifications could void the User's authority to operate the equipment.

2. If the MP3 watch shuts down and the buttons are not workable, please press **ON/OFF/▶/||** and **▶||/VOLUME+** at the same time to reset.

